

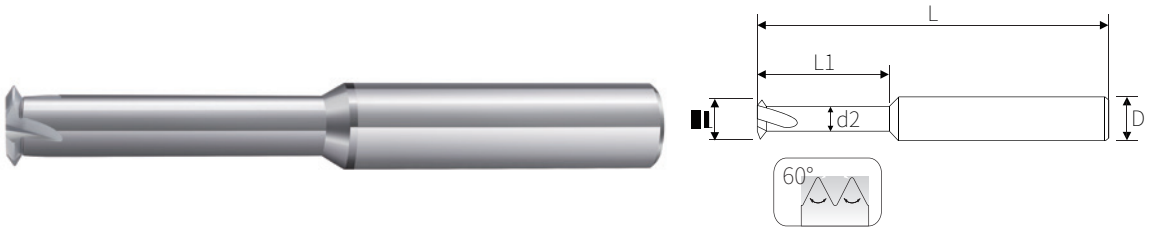
# 单齿螺纹铣刀

Single Tooth Carbide Thread Milling



◎ = 最佳 Best ○ = 适合 Good

P			H				K	M	N				S	
碳素钢	合金钢	预硬钢	淬火钢 Hardened Steel				铸铁	不锈钢	铝合金	铜合金	塑胶	亚克力	高温合金	钛合金
Carbon Steel	Alloy Steel	Prehardened Steel	~48HRC	~55HRC	~60HRC	~65HRC	Cast Iron	Stainless Steels	Aluminium Alloys	Copper Alloys	Plastic Cement	Acrylic		
◎	◎	◎	○				◎	◎						



单位 UNIT=MM

产品编码	型号	尺寸规格					
		mm	刃径d1	避空直径d2	避空长L1	柄径D	总长L
ISO S0.2 0.550150450 D	M0.8*0.2	0.55	0.32	1.5	4.0	50	2
ISO S0.225 0.6250180450 D	M0.9*0.225	0.625	0.35	1.8	4.0	50	2
ISO S0.25 0.720250450 D	M1.0*0.25	0.72	0.43	2.5	4.0	50	2
ISO S0.25 0.90320450 D	M1.2*0.25	0.9	0.63	3.2	4.0	50	2
ISO S0.3 1.050350450 D	M1.4*0.3	1.05	0.7	3.5	4.0	50	3
ISO S0.35 1.2040450 D	M1.6*0.35	1.2	0.8	4.0	4.0	50	3
ISO S0.4 1.55060450 D	M2.0*0.4	1.55	0.9	6.0	4.0	50	3
ISO S0.45 1.960650450 D	M2.5*0.45	1.96	1.3	6.5	4.0	50	4
ISO S0.5 2.35080450 D	M3.0*0.5	2.35	1.6	8.0	4.0	50	4
ISO S0.7 3.15100450 D	M4.0*0.7	3.15	2.1	10	4.0	50	4
ISO S0.8 3.9120450 D	M5.0*0.8	3.9	2.8	12	4.0	50	4
ISO S1.0 4.8150650 D	M6.0*1.0	4.8	3.4	15	6.0	50	4
ISO S1.25 6.0200660 D	M8.0*1.25	6.0	4.2	20	6.0	60	4
ISO S1.5 7.7250860 D	M10*1.5	7.7	5.6	25	8.0	60	4
ISO S1.75 9.6301075 D	M12*1.75	9.6	7.3	30	10	75	4
ISO S2.0 10361075 D	M14*2.0	10	7.3	36	10	75	4
ISO S2.5 12381275 D	M18*2.5	12	8.8	38	12	75	4
ISO S3.0 144814100 D	M24*3.0	14	10.2	48	14	100	6
ISO S3.5 165016100 D	M30*3.5	16	11.5	50	16	100	6

# 单齿螺纹铣刀-钛合金/高温合金

Single Tooth Carbide Thread Milling-Titanium Alloy/High Temperature Alloy



◎ = 最佳 Best ○ = 适合 Good

P			H				K	M	N				S	
碳素钢	合金钢	预硬钢	淬火钢钢 Hardened Steel				铸铁	不锈钢	铝合金	铜合金	塑胶	亚克力	高温合金	钛合金
Carbon Steel	Alloy Steel	Prehardened Steel	~48HRC	~55HRC	~60HRC	~65HRC	Cast Iron	Stainless Steels	Aluminium Alloys	Copper Alloys	Plastic Cement	Acrylic		
○	◎	○	○				○	◎					◎	◎



单位 UNIT=MM

产品编码	型号	尺寸规格						
		mm	刃径d1	避空直径d2	避空长L1	柄径D	总长L	刃数F
ISO S0.35 1.2040450 X	M1.6*0.35		1.2	0.8	4.0	4.0	50	3
ISO S0.4 1.55060450 X	M2.0*0.4		1.55	0.9	6.0	4.0	50	3
ISO S0.45 1.960650450 X	M2.5*0.45		1.96	1.3	6.5	4.0	50	4
ISO S0.5 2.35080450 X	M3.0*0.5		2.35	1.6	8.0	4.0	50	4
ISO S0.7 3.15100450 X	M4.0*0.7		3.15	2.1	10	4.0	50	4
ISO S0.8 3.9120450 X	M5.0*0.8		3.9	2.8	12	4.0	50	4
ISO S1.0 4.8150650 X	M6.0*1.0		4.8	3.4	15	6.0	50	4
ISO S1.25 6.0200660 X	M8.0*1.25		6.0	4.2	20	6.0	60	4
ISO S1.5 7.7250860 X	M10*1.5		7.7	5.6	25	8.0	60	4
ISO S1.75 9.6301075 X	M12*1.75		9.6	7.3	30	10	75	4
ISO S2.0 10361075 X	M14*2.0		10	7.3	36	10	75	4
ISO S2.5 12381275 X	M18*2.5		12	8.8	38	12	75	4
ISO S3.0 144814100 X	M24*3.0		14	10.2	48	14	100	6
ISO S3.5 165016100 X	M30*3.5		16	11.5	50	16	100	6

# 单齿加长螺纹铣刀

Single Tooth Carbide Thread Milling Extended



◎ = 最佳 Best    ○ = 适合 Good

P			H				K	M	N				S	
碳素钢 Carbon Steel	合金钢 Alloy Steel	预硬钢 Prehardened Steel	淬火钢 Hardened Steel				铸铁 Cast Iron	不锈钢 Stainless Steels	铝合金 Aluminium Alloys	铜合金 Copper Alloys	塑胶 Plastic Cement	亚克力 Acrylic	高温合金	钛合金
~48HRC	~55HRC	~60HRC	~65HRC											
◎	◎	◎	○				◎	◎						



单位 UNIT=MM

型号	型号	尺寸规格						
		mm	刃径d1	避空直径d2	避空长L1	柄径D	总长L	刃数F
ISO S0.3 1.0503504100 D	M1.4*0.3		1.05	0.7	3.5	4.0	100	3
ISO S0.35 1.20404100 D	M1.6*0.35		1.2	0.8	4.0	4.0	100	3
ISO S0.4 1.550604100 D	M2.0*0.4		1.55	0.9	6.0	4.0	100	3
ISO S0.45 1.9606504100 D	M2.5*0.45		1.96	1.3	6.5	4.0	100	4
ISO S0.5 2.350804100 D	M3.0*0.5		2.35	1.6	8.0	4.0	100	4
ISO S0.7 3.151004100 D	M4.0*0.7		3.15	2.1	10	4.0	100	4
ISO S0.8 3.91204100 D	M5.0*0.8		3.9	2.8	12	4.0	100	4
ISO S1.0 4.81506100 D	M6.0*1.0		4.8	3.4	15	6.0	100	4
ISO S1.25 6.02006100 D	M8.0*1.25		6.0	4.2	20	6.0	100	4
ISO S1.5 7.72508100 D	M10*1.5		7.7	5.6	25	8.0	100	4
ISO S1.75 9.63010100 D	M12*1.75		9.6	7.3	30	10	100	4
ISO S2.0 103610100 D	M14*2.0		10	7.3	36	10	100	4
ISO S2.5 123812100 D	M18*2.5		12	8.8	38	12	100	4
ISO S3.0 144814100 D	M24*3.0		14	10.2	48	14	100	6
ISO S3.5 165016100 D	M30*3.5		16	11.5	50	16	100	6

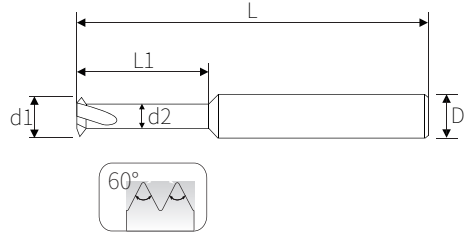
# 单齿钢用范围螺纹铣刀

Single Tooth Range Carbide Thread Milling-For Steel



◎ = 最佳 Best    ○ = 适合 Good

P			H				K	M	N				S	
碳素钢	合金钢	预硬钢	淬火钢钢 Hardened Steel				铸铁	不锈钢	铝合金	铜合金	塑胶	亚克力	高温合金	钛合金
Carbon Steel	Alloy Steel	Prehardened Steel	~48HRC	~55HRC	~60HRC	~65HRC	Cast Iron	Stainless Steels	Aluminium Alloys	Copper Alloys	Plastic Cement	Acrylic		
◎	◎	◎	○				◎	◎						



单位 UNIT=MM

产品编码	型号	尺寸规格				
		mm	刃径d1	避空直径d2	避空长L1	柄径D
ISO S0.25-0.35 1.050350450 D	0.25-0.35	1.05	0.6	3.5	4.0	50
ISO S0.25-0.35 1.20040450 D	0.25-0.35	1.2	0.75	4.0	4.0	50
ISO S0.3-0.5 1.55060450 D	0.3-0.5	1.55	0.9	6.0	4.0	50
ISO S0.3-0.7 1.960650450 D	0.3-0.7	1.96	1.1	6.5	4.0	50
ISO S0.3-0.8 2.35080450 D	0.3-0.8	2.35	1.4	8.0	4.0	50
ISO S0.3-0.8 3.15100450 D	0.3-0.8	3.15	2.0	10	4.0	50
ISO S0.3-1.0 3.9120450 D	0.3-1.0	3.9	2.5	12	4.0	50
ISO S0.5-1.5 4.8150650 D	0.5-1.5	4.8	2.9	15	6.0	50
ISO S0.5-1.75 6.0200450 D	0.5-1.75	6.0	4.0	20	6.0	50
ISO S0.5-2.5 7.7250860 D	0.5-2.5	7.7	4.8	25	8.0	60
ISO S1.0-3.0 9.6301075 D	1.0-3.0	9.6	6.0	30	10	75
ISO S1.0-3.5 10361075 D	1.0-3.5	10	6.0	36	10	75
ISO S1.0-4.0 12381275 D	1.0-4.0	12	7.3	38	12	75
ISO S1.5-4.0 144814100 D	1.5-4.0	14	9.0	48	14	100
ISO S2.0-5.0 165016100 D	2.0-5.0	16	10	50	16	100

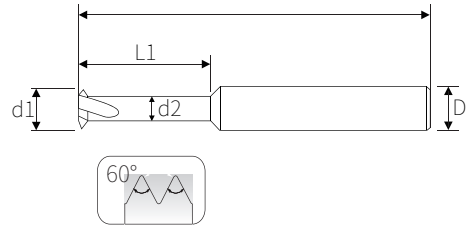
# 单齿钢用范围螺纹铣刀-避空加长

Single Tooth Range Carbide Thread Milling-L1 Extended



◎ = 最佳 Best ○ = 适合 Good

P			H				K	M	N				S	
碳素钢 Carbon Steel	合金钢 Alloy Steel	预硬钢 Prehardened Steel	淬火钢钢 Hardened Steel				铸铁 Cast Iron	不锈钢 Stainless Steels	铝合金 Aluminium Alloys	铜合金 Copper Alloys	塑胶 Plastic Cement	亚克力 Acrylic	高温合金	钛合金
~48HRC			~55HRC	~60HRC	~65HRC									
◎	◎	◎	○				◎	◎						



单位 UNIT=MM

产品编码	螺纹型号			螺距(P)		尺寸规格						
	M粗牙	细牙	UN, UNS, UNF, UNEF	mm	tpi	d1	d2	L1	D	L	F	
ISO S0.5-0.8 3.90160450 D	M5x0.8	M5x0.5 M5X0.75	No.10-56UNS, No.10-48UNS, No.40UNS,	0.5-0.8	32-56	3.9	2.8	16	4.0	50	4	
ISO S0.5-1.0 4.850200660 D	M6x1.0	M6x0.5 M6X0.75	No.12-56UNS, No.12-48UNS, 1/4-40UNS,1/4-36UNS, 1/4-32UNEF, 1/4-28UNF, 1/4-27UNS, 1/4-24UNS	0.5-1.0	24-56	4.85	3.5	20	6.0	60	5	
ISO S0.5-1.25 5.9250660 D	M8x1.25	M7x0.5 M7X0.75 M7.5X1.0	5/16-48UNS, 5/16-40UNS, 5/16-36UNS,5/16-36UNEF, 5/16-28UN, 5/16-27UNS, 5/16-24UNS, 5/16-20UNS	0.5-1.25	20-48	5.9	4.2	25	6.0	60	5	
ISO S0.5-1.0 9.8351075 D		M10x0.5 M11X0.75 M11X1.0	7/16-32UNS, 7/16-28UNEF, 7/16-27UNS,7/16-24UNS	0.5-1.0	24-56	9.8	8.5	35	10	75	6	
ISO S1.0-1.5 7.9320875 D	M10x1.5	M10x1.0 M10X1.25	3/8-24UNF, 3/8-20NS, 7/16-18UNS,7/16-16UNS	1.0-1.50	13-24	7.9	5.8	32	8.0	75	6	
ISO S1.0-1.75 9.9381075 D	M12x1.75	M12x1.0 M12X1.25 M12X1.5	1/2-24UNS, 1/2-20UNS, 1/2-18UNS,1/2-16UNS, 1/2-14UNS	1.0-1.75	14-24	9.9	7.6	38	10	75	6	
ISO S1.0-2.0 11.9401275 D	M16x2.0	M13.5X1.0 M14X1.25 M14X1.5	9/16-24UNEF, 9/16-18UNF, 5/8-18UNF,3/4-16UNF, 7/8-14UNF	1.0-2.0	14-24	11.9	9.6	40	12	75	6	
ISO S2.0-3.0 144814100 D	M18x2.5 M20x2.5 M22x2.5 M24x3.0 M27x3.0		9/16-12UNC, 5/8-11UNC 3/4-10UNC, 7/8-9UNC	2.0-3.0	9-12	14	10.2	48	14	100	6	
ISO S2.0-3.5 165016100 D	M20x2.5 M22x2.5 M24x3.0 M27x3.0 M30x3.5 M33x3.5		9/16-12UNC, 5/8-11UNC 3/4-10UNC, 1-8UNC	2.0-3.5	8-12	16	11.5	50	16	100	6	

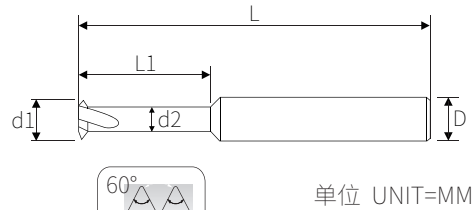
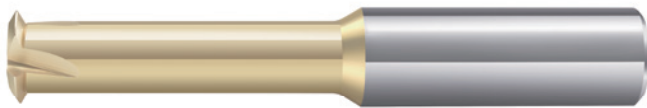
# 单齿范围螺纹铣刀-钛合金/高温合金



Single Tooth Range Champagn Carbide Thread Milling-For Titanium Alloy/High Temperature Alloy

◎ = 最佳 Best ○ = 适合 Good

P			H				K	M	N				S	
碳素钢	合金钢	预硬钢	淬火钢钢 Hardened Steel				铸铁	不锈钢	铝合金	铜合金	塑胶	亚克力	高温合金	钛合金
Carbon Steel	Alloy Steel	Prehardened Steel	~48HRC	~55HRC	~60HRC	~65HRC	Cast Iron	Stainless Steels	Aluminium Alloys	Copper Alloys	Plastic Cement	Acrylic		
○	◎	○	○				○	◎					◎	◎



单位 UNIT=MM

产品编码	螺纹型号			螺距(P)		尺寸规格							
	M粗牙	细牙	UN, UNS, UNF, UNEF	mm	tpi	d1	d2	L1	D	L	F		
ISO S0.5-0.8 3.90160450 X	M5x0.8	M5x0.5 M5X0.75	No.10-56UNS, No.10-48UNS, No.40UNS,	0.5-0.8	32-56	3.9	2.8	16	4.0	50	4		
ISO S0.5-1.0 4.850200660 X	M6x1.0	M6x0.5 M6X0.75	No.12-56UNS, No.12-48UNS, 1/4-40UNS,1/4-36UNS, 1/4-32UNEF, 1/4-28UNF, 1/4-27UNS, 1/4-24UNS	0.5-1.0	24-56	4.85	3.5	20	6.0	60	5		
ISO S0.5-1.25 5.9250660 X	M8x1.25	M7x0.5 M7X0.75 M7.5X1.0	5/16-48UNS, 5/16-40UNS, 5/16-36UNS,5/16-36UNEF, 5/16-28UN, 5/16-27UNS, 5/16-24UNS, 5/16-20UNS	0.5-1.25	20-48	5.9	4.2	25	6.0	60	5		
ISO S0.5-1.0 9.8351075 X		M10x0.5 M11X0.75 M11X1.0	7/16-32UNS, 7/16-28UNEF, 7/16-27UNS,7/16-24UNS	0.5-1.0	24-56	9.8	8.5	35	10	75	6		
ISO S1.0-1.5 7.9320875 X	M10x1.5	M10x1.0 M10X1.25	3/8-24UNF, 3/8-20NS, 7/16-18UNS,7/16-16UNS	1.0-1.50	13-24	7.9	5.8	32	8.0	75	6		
ISO S1.0-1.75 9.9381075 X	M12x1.75	M12x1.0 M12X1.25 M12X1.5	1/2-24UNS, 1/2-20UNS, 1/2-18UNS,1/2-16UNS, 1/2-14UNS	1.0-1.75	14-24	9.9	7.6	38	10	75	6		
ISO S1.0-2.0 11.9401275 X	M16x2.0	M13.5X1.0 M14X1.25 M14X1.5	9/16-24UNEF, 9/16-18UNF, 5/8-18UNF,3/4-16UNF, 7/8-14UNF	1.0-2.0	14-24	11.9	9.6	40	12	75	6		
ISO S2.0-3.0 144814100 X	M18x2.5 M20x2.5 M22x2.5 M24x3.0 M27x3.0		9/16-12UNC, 5/8-11UNC 3/4-10UNC, 7/8-9UNC	2.0-3.0	9-12	14	10.2	48	14	100	6		
ISO S2.0-3.5 165016100 X	M20x2.5 M22x2.5 M24x3.0 M27x3.0 M30x3.5 M33x3.5		9/16-12UNC, 5/8-11UNC 3/4-10UNC, 1-8UNC	2.0-3.5	8-12	16	11.5	50	16	100	6		

# 单齿DLC七彩铝用范围螺纹铣刀

Single Tooth Dlc Seven Color Carbide Thread Milling- For Aluminum



◎ = 最佳 Best    ○ = 适合 Good

P			H				K	M	N				S	
碳素钢	合金钢	预硬钢	淬火钢钢 Hardened Steel				铸铁	不锈钢	铝合金	铜合金	塑胶	亚克力	高温合金	钛合金
Carbon Steel	Alloy Steel	Prehardened Steel	~48HRC	~55HRC	~60HRC	~65HRC	Cast Iron	Stainless Steels	Aluminium Alloys	Copper Alloys	Plastic Cement	Acrylic		
									◎	◎	◎	◎		



单位 UNIT=MM

产品编码	牙距	尺寸规格						
		mm	刃径d1	避空直径d2	避空长L1	柄径D	总长L	刃数F
ISO S0.25 0.70300450 DCL	P0.25		0.72	0.43	2.5	4.0	50	2
ISO S0.25 0.70300450 DCL	P0.25		0.9	0.63	3.2	4.0	50	2
ISO S0.3 1.70300450 DCL	P0.3		1.05	0.6	3.5	4.0	50	3
ISO S0.35 1.70300450 DCL	P0.35		1.2	0.75	4.0	4.0	50	3
ISO S0.4-0.5 1.70300450 DCL	P0.4-P0.5		1.55	0.9	6.0	4.0	50	3
ISO S0.45-0.6 1.70300450 DCL	P0.45-P0.6		1.96	1.1	6.5	4.0	50	4
ISO S0.5-0.7 2.70300450 DCL	P0.5-P0.7		2.35	1.4	8.0	4.0	50	4
ISO S0.5-1.0 3.70300450 DCL	P0.5-P1.0		3.15	2.0	10	4.0	50	4
ISO S0.5-1.0 3.70300450 DCL	P0.5-P1.0		3.9	2.5	12	4.0	50	4
ISO S0.5-1.5 4.70300450 DCL	P0.5-P1.5		4.8	2.9	15	6.0	50	4
ISO S0.5-1.5 6.70300450 DCL	P0.5-P1.5		6.0	4.0	20	6.0	50	4
ISO S0.8-2.0 7.70300450 DCL	P0.8-P2.0		7.7	4.8	25	8.0	60	4
ISO S1.0-2.5 9.70300450 DCL	P1.0-P2.5		9.6	6.0	30	10	75	4
ISO S1.0-3.0 10.70300450 DCL	P1.0-P3.0		10	6.0	36	10	75	4
ISO S1.25-3.5 12.70300450 DCL	P1.25-3.5		12	7.3	38	12	75	4
ISO S1.5-3.5 144814100 DLC	P1.5-3.5		14	9.0	48	14	100	4
ISO S2.0-4.0 165016100 DLC	P2.0-4.0		16	10	50	16	100	4

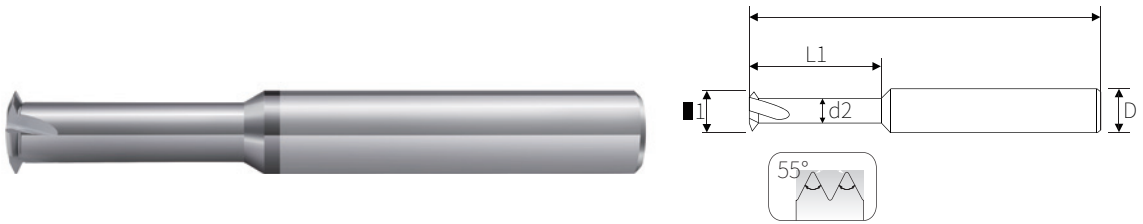
# 单齿55°英制范围螺纹铣刀

Single Tooth 55° Inch Range Thread Milling Cutter



◎ = 最佳 Best ○ = 适合 Good

P			H				K	M	N				S	
碳素钢	合金钢	预硬钢	淬火钢 Hardened Steel				铸铁	不锈钢	铝合金	铜合金	塑胶	亚克力	高温合金	钛合金
Carbon Steel	Alloy Steel	Prehardened Steel	~48HRC	~55HRC	~60HRC	~65HRC	Cast Iron	Stainless Steels	Aluminium Alloys	Copper Alloys	Plastic Cement	Acrylic		
◎	◎	◎	○				◎	◎						○



单位 UNIT=MM

产品编码	螺纹规格	牙距	刃径d1	角度	避空直径d2	避空长L1	柄径D	总长L	刃数F	
W S32 3.10800450 D	W5/32	P0.793	3.1	55°	1.9	8	4.0	50	4	
W S24 3.5100450 D	W3/16-24	P1.058	3.5	55°	2.0	10	4.0	50	4	
W S20 4.0120450 D	W1/4-20	P1.27	4.0	55°	2.2	12	4.0	50	4	
W S28-18 6.0140650 D	W5/16-18 G1/8-28	P0.907-P1.411	6.0	55°	4.5	14	6.0	50	4	
W S19-14 8.0220860 D	W3/8-16 G1/4-19	W7/16-14 G3/8-19	P1.336-P1.814	8.0	55°	5.9	22	8.0	60	4
W S19-14 10301075 D	W7/16-14 G1/4-19 G3/8-19	G1/2-14 G3/4-14	P1.336-P1.814	10	55°	7.3	30	10	75	4
W S14-10 12381275 D	W5/8-11 G1/2-14 G1-11	W3/4-10 G3/4-14	P1.336-P2.54	12	55°	8.2	38	12	75	4



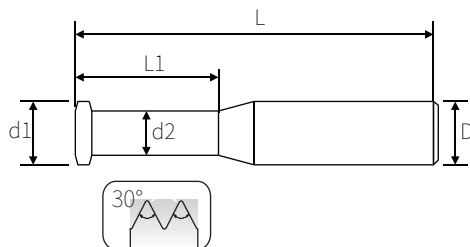
# 30°梯形螺纹铣刀

30° Trapezoidal Thread Milling Cutter



◎ = 最佳 Best    ○ = 适合 Good

P			H				K	M	N				S	
碳素钢	合金钢	预硬钢	淬火钢钢 Hardened Steel				铸铁	不锈钢	铝合金	铜合金	塑胶	亚克力	高温合金	钛合金
Carbon Steel	Alloy Steel	Prehardened Steel	~48HRC	~55HRC	~60HRC	~65HRC	Cast Iron	Stainless Steels	Aluminium Alloys	Copper Alloys	Plastic Cement	Acrylic		
◎	◎	◎	○				◎	◎						○



单位 UNIT=MM

产品编码	30°螺纹铣刀	刃径d1	避空直径d2	避空长L1	柄径D	总长L	刃数F
TR S1.0 5.5200650 D	TR 7x1.0	5.5	4.1	20	6.0	50	4
TR S1.5 6.0200650 D	TR 8x1.5 TR 9x1.5	6.0	4.0	20	6.0	50	4
TR S2.0 6.4200660 D	TR 9x2 TR 10x2 TR 11x2	6.4	3.7	20	8.0	60	4
TR S2.0 9.4351075 D	TR 12x2 TR 14x2 TR 16x2 TR 18x2 TR 20x2	9.4	6.5	35	10	75	4
TR S3.0 7.4250860 D	TR 11x3 TR 12x3 TR 14x3	7.4	3.8	25	8.0	60	4
TR S3.0 10351075 D	TR 14x3 TR 22x3 TR 24x3 TR 26x3 TR 28x3 TR 30x3	10	6.0	35	10	75	4
TR S4.0 11381275 D	TR 16x4 TR 18x4 TR 20x4	11	6.0	38	12	75	4
TR S5.0 145014100 D	TR 22x5 TR 24x5 TR 26x5 TR 28x5	14	7.8	50	14	100	4
TR S6.0 165016100 D	TR 30*6 TR 32*6 TR 34*6 TR 36*6 TR 38*6 TR 40*6 TR 42*6	16	9.0	50	16	100	4

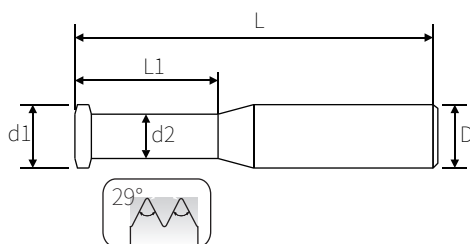
# 29°爱克母螺纹铣刀

29 ° Acme Female Thread Milling Cutter



◎ = 最佳 Best    ○ = 适合 Good

P			H				K	M	N				S	
碳素钢	合金钢	预硬钢	淬火钢 Hardened Steel				铸铁	不锈钢	铝合金	铜合金	塑胶	亚克力	高温合金	钛合金
Carbon Steel	Alloy Steel	Prehardened Steel	~48HRC	~55HRC	~60HRC	~65HRC	Cast Iron	Stainless Steels	Aluminium Alloys	Copper Alloys	Plastic Cement	Acrylic		
◎	◎	◎	○				◎	◎						○



单位 UNIT=MM

产品编码	型号	刃径d1	避空直径d2	避空长L1	柄径D	总长L	刃数F
ACME S16 4.7150650 D	1/4-16	4.7	2.6	15	6.0	50	4
ACME S14 6.0200650 D	5/16-14	6.0	3.6	20	6.0	50	4
ACME S12 7.2250860 D	3/8-12 7/16-12	7.2	4.5	25	8.0	60	4
ACME S10 10351075 D	1/2-10	10	6.6	35	10	75	4
ACME S8 12351275 D	5/8-8	12	7.5	35	12	75	4
ACME S6 12351275 D	3/4-6 7/8-6	12	6.5	35	12	75	4

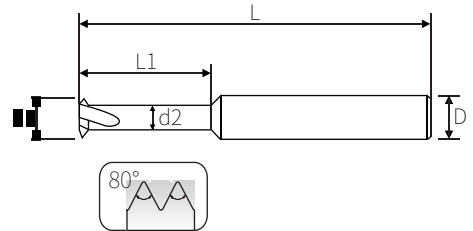
# 80°PG德标螺纹铣刀

PG German standard thread milling cutter



◎ = 最佳 Best    ○ = 适合 Good

P			H				K	M	N				S	
碳素钢	合金钢	预硬钢	淬火钢钢 Hardened Steel				铸铁	不锈钢	铝合金	铜合金	塑胶	亚克力	高温合金	钛合金
Carbon Steel	Alloy Steel	Prehardened Steel	~48HRC	~55HRC	~60HRC	~65HRC	Cast Iron	Stainlee Steels	Aluminium Alloys	Copper Alloys	Plastic Cement	Acrylic		
◎	◎	◎	○				◎	◎						○



单位 UNIT=MM

产品编码	螺纹规格	刃径d1	避空直径d2	避空长L1	柄径D	总长L	刃数F
PG S 8.0150860 D	PG7 PG9 PG11 PG13.5 PG16	8	6	15	8.0	60	4
PG S 10201075 D	PG9 PG11 PG13.5 PG16	10	7	20	10	75	4
PG S 12201275 D	PG21 PG29 PG36 PG42 PG48	12	7	20	12	75	4

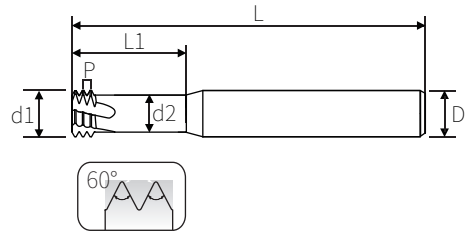
# 三排牙公制螺纹铣刀-两倍径

Three Tooth Metric Thread Milling Cutter-2D



◎ = 最佳 Best ○ = 适合 Good

P			H				K	M	N				S	
碳素钢	合金钢	预硬钢	淬火钢 Hardened Steel				铸铁	不锈钢	铝合金	铜合金	塑胶	亚克力	高温合金	钛合金
Carbon Steel	Alloy Steel	Prehardened Steel	~48HRC	~55HRC	~60HRC	~65HRC	Cast Iron	Stainless Steels	Aluminium Alloys	Copper Alloys	Plastic Cement	Acrylic		
◎	◎	◎	◎	○			◎	◎					○	◎



单位 UNIT=MM

产品编码	尺寸	螺距P	刃径d1	避空直径d2	避空长L1	柄径D	总长L	刃数F
ISO T0.25 0.730200450 D	M1.0	0.25	0.73	0.43	2.0	4.0	50	3
ISO T0.25 0.920240450 D	M1.2	0.25	0.92	0.62	2.4	4.0	50	3
ISO T0.3 1.050280450 D	M1.4	0.3	1.05	0.65	2.8	4.0	50	3
ISO T0.35 1.20320450 D	M1.6	0.35	1.2	0.78	3.2	4.0	50	3
ISO T0.35 1.40360450 D	M1.8	0.35	1.4	0.98	3.6	4.0	50	3
ISO T0.4 1.550400450 D	M2.0	0.4	1.55	1.05	4.0	4.0	50	3
ISO T0.45 1.70500450 D	M2.2	0.45	1.7	1.1	5.0	4.0	50	3
ISO T0.45 2.00500450 D	M2.5	0.45	2.0	1.45	5.0	4.0	50	3
ISO T0.5 2.40600450 D	M3.0	0.5	2.4	1.8	6.0	4.0	50	3
ISO T0.6 2.750800450 D	M3.5	0.6	2.75	2.0	8.0	4.0	50	3
ISO T0.7 3.150800450 D	M4.0	0.7	3.15	2.3	8.0	4.0	50	3
ISO T0.75 3.50900450 D	M4.5	0.75	3.5	2.55	9.0	4.0	50	3
ISO T0.8 4.0100450 D	M5.0	0.8	4.0	3.0	10	4.0	50	3
ISO T1.0 4.8120650 D	M6.0	1.0	4.8	3.6	12	6.0	50	3
ISO T1.0 6.0160650 D	M8.0	1.0	6.0	4.8	16	6.0	50	4
ISO T1.25 6.0160650 D	M8.0	1.25	6.0	4.5	16	6.0	50	4
ISO T1.0 8.0200860 D	M10	1.0	8.0	6.8	20	8.0	60	4
ISO T1.5 8.0200860 D	M10	1.5	8.0	6.2	20	8.0	60	4
ISO T1.0 10241075 D	M12	1.0	10	8.7	24	10	75	4
ISO T1.5 10241075 D	M12	1.5	10	8.1	24	10	75	4
ISO T1.75 10241075 D	M12	1.75	10	7.8	24	10	75	4
ISO T1.5 12281275 D	M14	1.5	12	10.1	28	12	75	4
ISO T2.0 10281075 D	M14	2.0	10	7.5	28	10	75	4
ISO T2.0 12321275 D	M16	2.0	12	9.5	32	12	75	4
ISO T1.5 143214100 D	M16	1.5	14	12.1	32	14	100	4
ISO T2.0 13.53214100 D	M16	2.0	13.5	11	32	14	100	4
ISO T1.5 164016100 D	M20	1.5	16	14.1	40	16	100	4
ISO T2.5 164016100 D	M20	2.5	16	12.6	40	16	100	6
ISO T3.0 164816100 D	M24	3.0	16	12	48	16	100	6

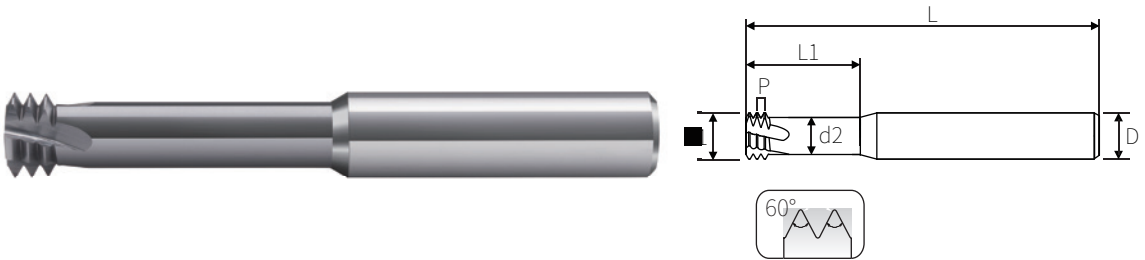
# 三排牙公制螺纹铣刀-三倍径

Three Tooth Metric Thread Milling Cutter-3D



◎ = 最佳 Best ○ = 适合 Good

P			H				K	M	N				S	
碳素钢 Carbon Steel	合金钢 Alloy Steel	预硬钢 Prehardened Steel	淬火钢钢 Hardened Steel				铸铁 Cast Iron	不锈钢 Stainless Steels	铝合金 Aluminium Alloys	铜合金 Copper Alloys	塑胶 Plastic Cement	亚克力 Acrylic	高温合金	钛合金
			~48HRC	~55HRC	~60HRC	~65HRC								
◎	◎	◎	◎	○			◎	◎				○	◎	



单位 UNIT=MM

产品编码	尺寸	螺距P	刃径d1	避空直径d2	避空长L1	柄径D	总长L	刃数F
ISO T0.25 0.730300450 D	M1.0	0.25	0.73	0.43	3.0	4.0	50	3
ISO T0.25 0.920360450 D	M1.2	0.25	0.92	0.62	3.6	4.0	50	3
ISO T0.3 1.050420450 D	M1.4	0.3	1.05	0.65	4.2	4.0	50	3
ISO T0.35 1.20480450 D	M1.6	0.35	1.2	0.78	4.8	4.0	50	3
ISO T0.4 1.550600450 D	M2.0	0.4	1.55	1.05	6.0	4.0	50	3
ISO T0.45 2.00750450 D	M2.5	0.45	2.0	1.45	7.5	4.0	50	3
ISO T0.5 2.40900450 D	M3.0	0.5	2.4	1.8	9.0	4.0	50	3
ISO T0.7 3.15120450 D	M4.0	0.7	3.15	2.3	12	4.0	50	3
ISO T0.8 4.0150450 D	M5.0	0.8	4.0	3.0	15	4.0	50	3
ISO T1.0 4.8180650 D	M6.0	1.0	4.8	3.6	18	6.0	50	3
ISO T1.25 6.0240650 D	M8.0	1.25	6.0	4.5	24	6.0	50	4
ISO T1.5 8.0300860 D	M10	1.5	8.0	6.2	30	8.0	60	4
ISO T1.75 10361075 D	M12	1.75	10	7.8	36	10	75	4

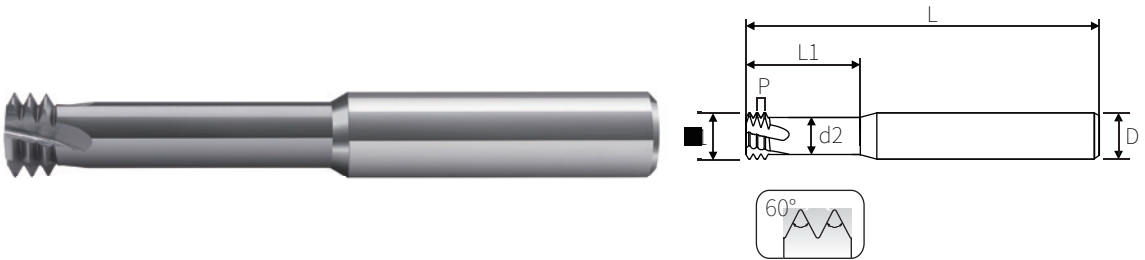
# 三排牙公制螺纹铣刀-四倍径

Four Tooth Metric Thread Milling Cutter-4D



◎ = 最佳 Best    ○ = 适合 Good

P			H				K	M	N				S	
碳素钢	合金钢	预硬钢	淬火钢钢 Hardened Steel				铸铁	不锈钢	铝合金	铜合金	塑胶	亚克力	高温合金	钛合金
Carbon Steel	Alloy Steel	Prehardened Steel	~48HRC	~55HRC	~60HRC	~65HRC	Cast Iron	Stainless Steels	Aluminium Alloys	Copper Alloys	Plastic Cement	Acrylic		
◎	◎	◎	◎	○			◎	◎					○	◎



单位 UNIT=MM

产品编码	尺寸	螺距P	刃径d1	避空直径d2	避空长 L1	柄径D	总长L	刃数F
ISO T0.4 1.550800450 D	M2.0	0.4	1.55	1.05	8.0	4.0	50	3
ISO T0.45 2.00100450 D	M2.5	0.45	2.0	1.45	10	4.0	50	3
ISO T0.5 2.4120450 D	M3.0	0.5	2.4	1.8	12	4.0	50	3
ISO T0.7 3.15160450 D	M4.0	0.7	3.15	2.3	16	4.0	50	3
ISO T0.8 4.0200450 D	M5.0	0.8	4.0	3.0	20	4.0	50	3

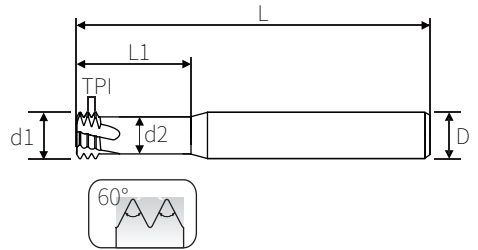
# 三排牙公制螺纹铣刀-钛合金/高温合金



Three Teeth Metric Thread Milling- For Titanium Alloy/High Temperature Alloy

◎ = 最佳 Best ○ = 适合 Good

P			H				K	M	N				S	
碳素钢	合金钢	预硬钢	淬火钢 Hardened Steel				铸铁	不锈钢	铝合金	铜合金	塑胶	亚克力	高温合金	钛合金
Carbon Steel	Alloy Steel	Prehardened Steel	~48HRC	~55HRC	~60HRC	~65HRC	Cast Iron	Stainless Steels	Aluminium Alloys	Copper Alloys	Plastic Cement	Acrylic		
○	◎	○	○				○	◎					◎	◎



单位 UNIT=MM

产品编码	尺寸	螺距P	刃径d1	避空直径d2	避空长L1	柄径D	总长L	刃数F
ISO T0.25 0.730200450 X	M1.0	0.25	0.73	0.43	2.0	4.0	50	3
ISO T0.25 0.920240450 X	M1.2	0.25	0.92	0.62	2.4	4.0	50	3
ISO T0.3 1.050280450 X	M1.4	0.3	1.05	0.65	2.8	4.0	50	3
ISO T0.35 1.20320450 X	M1.6	0.35	1.2	0.78	3.2	4.0	50	3
ISO T0.35 1.40360450 X	M1.8	0.35	1.4	0.98	3.6	4.0	50	3
ISO T0.4 1.550400450 X	M2.0	0.4	1.55	1.05	4.0	4.0	50	3
ISO T0.45 1.70500450 X	M2.2	0.45	1.7	1.1	5.0	4.0	50	3
ISO T0.45 2.00500450 X	M2.5	0.45	2.0	1.45	5.0	4.0	50	3
ISO T0.5 2.40600450 X	M3.0	0.5	2.4	1.8	6.0	4.0	50	3
ISO T0.6 2.750800450 X	M3.5	0.6	2.75	2.0	8.0	4.0	50	3
ISO T0.7 3.150800450 X	M4.0	0.7	3.15	2.3	8.0	4.0	50	3
ISO T0.75 3.50900450 X	M4.5	0.75	3.5	2.55	9.0	4.0	50	3
ISO T0.8 4.0100450 X	M5.0	0.8	4.0	3.0	10	4.0	50	3
ISO T1.0 4.8120650 X	M6.0	1.0	4.8	3.6	12	6.0	50	3
ISO T1.0 6.0160650 X	M8.0	1.0	6.0	4.8	16	6.0	50	4
ISO T1.25 6.0160650 X	M8.0	1.25	6.0	4.5	16	6.0	50	4
ISO T1.0 8.0200860 X	M10	1.0	8.0	6.8	20	8.0	60	4
ISO T1.5 8.0200860 X	M10	1.5	8.0	6.2	20	8.0	60	4
ISO T1.0 10241075 X	M12	1.0	10	8.7	24	10	75	4
ISO T1.5 10241075 X	M12	1.5	10	8.1	24	10	75	4
ISO T1.75 10241075 X	M12	1.75	10	7.8	24	10	75	4
ISO T1.5 12281275 X	M14	1.5	12	10.1	28	12	75	4
ISO T2.0 10281075 X	M14	2.0	10	7.5	28	10	75	4
ISO T2.0 12321275 X	M16	2.0	12	9.5	32	12	75	4
ISO T1.5 143214100 X	M16	1.5	14	12.1	32	14	100	4
ISO T2.0 13.53214100 X	M16	2.0	13.5	11	32	14	100	4
ISO T1.5 164016100 X	M20	1.5	16	14.1	40	16	100	4
ISO T2.5 164016100 X	M20	2.5	16	12.6	40	16	100	6
ISO T3.0 164816100 X	M24	3.0	16	12	48	16	100	6

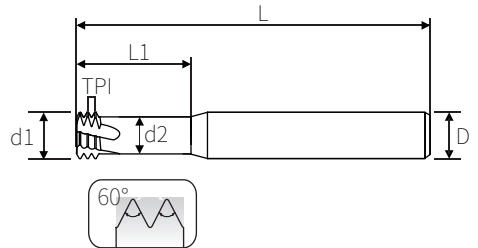
# 三排牙公制螺纹铣刀-钛合金/高温合金-三倍经



Three Teeth Metric Thread Milling- For Titanium Alloy/High Temperature Alloy-3D

◎ = 最佳 Best ○ = 适合 Good

P			H				K	M	N				S	
碳素钢	合金钢	预硬钢	淬火钢钢 Hardened Steel				铸铁	不锈钢	铝合金	铜合金	塑胶	亚克力	高温合金	钛合金
Carbon Steel	Alloy Steel	Prehardened Steel	~48HRC	~55HRC	~60HRC	~65HRC	Cast Iron	Stainless Steels	Aluminium Alloys	Copper Alloys	Plastic Cement	Acrylic		
○	◎	○	○				○	◎					◎	◎



单位 UNIT=MM

产品编码	尺寸	螺距P	刃径d1	避空直径d2	避空长 L1	柄径D	总长L	刃数F
ISO T0.25 0.730300450 X	M1.0	0.25	0.73		3.0	4.0	50	3
ISO T0.25 0.920360450 X	M1.2	0.25	0.92		3.6	4.0	50	3
ISO T0.3 1.050420450 X	M1.4	0.3	1.05		4.2	4.0	50	3
ISO T0.35 1.20480450 X	M1.6	0.35	1.2		4.8	4.0	50	3
ISO T0.4 1.550600450 X	M2.0	0.4	1.55		6.0	4.0	50	3
ISO T0.45 2.00750450 X	M2.5	0.45	2.0		7.5	4.0	50	3
ISO T0.5 2.40900450 X	M3.0	0.5	2.4		9.0	4.0	50	3
ISO T0.7 3.15120450 X	M4.0	0.7	3.15		12	4.0	50	3
ISO T0.8 4.0150450 X	M5.0	0.8	4.0		15	4.0	50	3
ISO T1.0 4.8180650 X	M6.0	1.0	4.8		18	6.0	50	3
ISO T1.25 6.0240650 X	M8.0	1.25	6.0		24	6.0	50	4
ISO T1.5 8.0300860 X	M10	1.5	8.0		30	8.0	60	4
ISO T1.75 10361075 X	M12	1.75	10		36	10	75	4



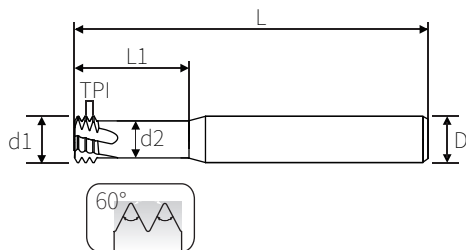
# 三排牙公制螺纹铣刀-航空航天专用

Three Tooth Metric Thread Milling-Aerospace Special



◎ = 最佳 Best    ○ = 适合 Good

P			H				K	M	N				S	
碳素钢	合金钢	预硬钢	淬火钢钢 Hardened Steel				铸铁	不锈钢	铝合金	铜合金	塑胶	亚克力	高温合金	钛合金
Carbon Steel	Alloy Steel	Prehardened Steel	~48HRC	~55HRC	~60HRC	~65HRC	Cast Iron	Stainless Steels	Aluminium Alloys	Copper Alloys	Plastic Cement	Acrylic		
○	◎	○	○				○	◎					◎	◎



单位 UNIT=MM

产品编码	尺寸	螺距P	刃径d1	避空直径d2	避空长 L1	柄径D	总长L
MJ T0.4 1.550600450 X	MJ2.0	0.4	1.55	1.05	6.0	4.0	50
MJ T0.45 2.00750450 X	MJ2.5	0.45	2.0	1.45	7.5	4.0	50
MJ T0.5 2.40900450 X	MJ3.0	0.5	2.4	1.8	9.0	4.0	50
MJ T0.7 3.15120450 X	MJ4.0	0.7	3.15	2.3	12	4.0	50
MJ T0.8 4.0150450 X	MJ5.0	0.8	4.0	3.0	15	4.0	50
MJ T1.0 4.8180650 X	MJ6.0	1.0	4.8	3.6	18	6.0	50
MJ T1.25 6.0240650 X	MJ8.0	1.25	6.0	4.5	24	6.0	50

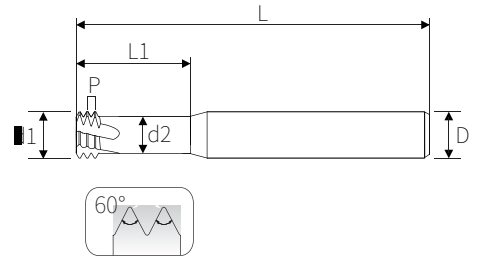
# 三排牙公制螺纹铣刀-古铜色涂层

Three Tooth Metric Thread Milling-Bronze Coating



◎ = 最佳 Best    ○ = 适合 Good

P			H				K	M	N				S	
碳素钢	合金钢	预硬钢	淬火钢钢 Hardened Steel				铸铁	不锈钢	铝合金	铜合金	塑胶	亚克力	高温合金	钛合金
Carbon Steel	Alloy Steel	Prehardened Steel	~48HRC	~55HRC	~60HRC	~65HRC	Cast Iron	Stainlee Steels	Aluminium Alloys	Copper Alloys	Plastic Cement	Acrylic		
◎	○	◎	◎				◎	○						



单位 UNIT=MM

产品编码	尺寸	螺距P	刃径d1	避空直径d2	避空长L1	柄径D	总长L	刃数F
ISO T0.25 0.730200450 R	M1.0	0.25	0.73	2.0	3.0	4.0	50	3
ISO T0.25 0.920240450 R	M1.2	0.25	0.92	2.4	3.6	4.0	50	3
ISO T0.3 1.050280450 R	M1.4	0.3	1.05	2.8	4.2	4.0	50	3
ISO T0.35 1.20320450 R	M1.6	0.35	1.2	3.2	4.8	4.0	50	3
ISO T0.4 1.550400450 R	M2.0	0.4	1.55	4.0	6.0	4.0	50	3
ISO T0.45 2.00500450 R	M2.5	0.45	2.0	5.0	7.5	4.0	50	3
ISO T0.5 2.40600450 R	M3.0	0.5	2.4	6.0	9.0	4.0	50	3
ISO T0.7 3.150800450 R	M4.0	0.7	3.15	8.0	12	4.0	50	3
ISO T0.8 4.0100450 R	M5.0	0.8	4.0	10	15	4.0	50	3
ISO T1.0 4.8120650 R	M6.0	1.0	4.8	12	18	6.0	50	3
ISO T1.25 6.0160650 R	M8.0	1.25	6.0	16	24	6.0	50	4
ISO T1.5 8.0200860 R	M10	1.5	8.0	20	30	8.0	60	4
ISO T1.75 10241075 R	M12	1.75	10	24	36	10	75	4
ISO T2.0 10281075 R	M14	2.0	10	10.1	28	10	75	4

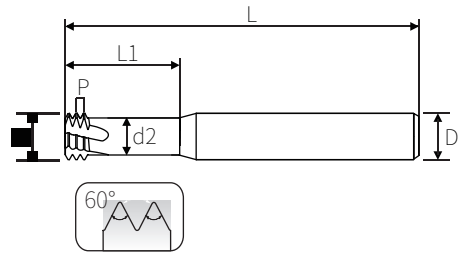
# 三排牙公制螺纹铣刀-七彩铝用

Three Tooth Metric Thread Milling-Colorful Aluminum



◎ = 最佳 Best ○ = 适合 Good

P			H				K	M	N				S	
碳素钢 Carbon Steel	合金钢 Alloy Steel	预硬钢 Prehardened Steel	淬火钢 Hardened Steel				铸铁 Cast Iron	不锈钢 Stainless Steels	铝合金 Aluminium Alloys	铜合金 Copper Alloys	塑胶 Plastic Cement	亚克力 Acrylic	高温合金	钛合金
			~48HRC	~55HRC	~60HRC	~65HRC			◎	◎	◎	◎		



单位 UNIT=MM

产品编码	尺寸	螺距P	刃径d1	避空直径d2	避空长 L1	柄径D	总长L	刃数F
ISO T0.25 0.730300450 DLC	M1.0	0.25	0.73	0.43	3.0	4.0	50	3
ISO T0.25 0.920360450 DLC	M1.2	0.25	0.92	0.62	3.6	4.0	50	3
ISO T0.3 1.050420450 DLC	M1.4	0.3	1.05	0.65	4.2	4.0	50	3
ISO T0.35 1.20480450 DLC	M1.6	0.35	1.2	0.78	4.8	4.0	50	3
ISO T0.4 1.550600450 DLC	M2.0	0.4	1.55	1.05	6.0	4.0	50	3
ISO T0.45 2.00750450 DLC	M2.5	0.45	2.0	1.45	7.5	4.0	50	3
ISO T0.5 2.40900450 DLC	M3.0	0.5	2.4	1.8	9.0	4.0	50	3
ISO T0.7 3.15120450 DLC	M4.0	0.7	3.15	2.3	12	4.0	50	3
ISO T0.8 4.0150450 DLC	M5.0	0.8	4.0	3.0	15	4.0	50	3
ISO T1.0 4.8180650 DLC	M6.0	1.0	4.8	3.6	18	6.0	50	3
ISO T1.25 6.0240650 DLC	M8.0	1.25	6.0	4.5	16	6.0	50	4
ISO T1.5 8.0300860 DLC	M10	1.5	8.0	6.2	30	8.0	60	4
ISO T1.75 10361075 DLC	M12	1.75	10	7.8	36	10	75	4
ISO T2.0 10371075 DLC	M14	2.0	10	7.5	28	10	75	4

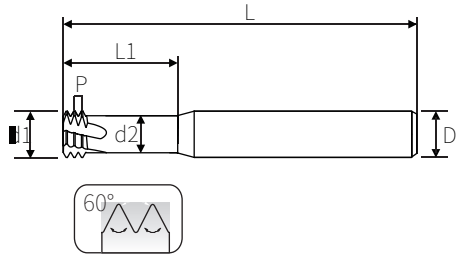
# 三排牙加长公制螺纹铣刀

Three Tooth Extended Metric Thread Milling Cutter



◎ = 最佳 Best ○ = 适合 Good

P			H				K	M	N				S	
碳素钢	合金钢	预硬钢	淬火钢钢 Hardened Steel				铸铁	不锈钢	铝合金	铜合金	塑胶	亚克力	高温合金	钛合金
Carbon Steel	Alloy Steel	Prehardened Steel	~48HRC	~55HRC	~60HRC	~65HRC	Cast Iron	Stainless Steels	Aluminium Alloys	Copper Alloys	Plastic Cement	Acrylic		
◎	◎	◎	◎	○			◎	◎					○	◎



单位 UNIT=MM

产品编码	尺寸	螺距P	刃径d1	避空直径d2	避空长 L1	柄径D	总长L	刃数F
ISO T0.35 1.203206100 A	M1.6	0.35	1.2	0.78	3.2	6.0	100	3
ISO T0.4 1.5504006100 A	M2.0	0.4	1.55	1.05	4.0	6.0	100	3
ISO T0.45 2.005006100 A	M2.5	0.45	2.0	1.45	5.0	6.0	100	3
ISO T0.5 2.400606100 A	M3.0	0.5	2.4	1.8	6.0	6.0	100	3
ISO T0.7 3.150806100 A	M4.0	0.7	3.15	2.3	8.0	6.0	100	3
ISO T0.8 4.051006100 A	M5.0	0.8	4.0	3.0	10	6.0	100	3
ISO T1.0 4.81206100 A	M6.0	1.0	4.8	3.6	12	6.0	100	3
ISO T1.25 6.01606100 A	M8.0	1.25	6.0	4.5	16	6.0	100	4
ISO T1.5 8.02008100 A	M10	1.5	8.0	6.2	20	8.0	100	4
ISO T1.75 102410100 A	M12	1.75	10	7.8	24	10	100	4
ISO T2.0 102810100 A	M14	2.0	10	7.5	28	10	100	4

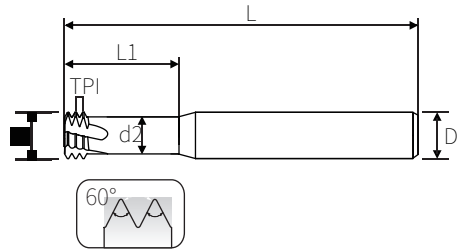
# 三排牙美制螺纹铣刀

Three Tooth American Thread Milling Cutter-UN



◎ = 最佳 Best ○ = 适合 Good

P			H				K	M	N				S	
碳素钢	合金钢	预硬钢	淬火钢钢 Hardened Steel				铸铁	不锈钢	铝合金	铜合金	塑胶	亚克力	高温合金	钛合金
Carbon Steel	Alloy Steel	Prehardened Steel	~48HRC	~55HRC	~60HRC	~65HRC	Cast Iron	Stainless Steels	Aluminium Alloys	Copper Alloys	Plastic Cement	Acrylic		
◎	◎	◎	◎	○			◎	◎					○	◎



单位 UNIT=MM

## UNF细螺纹

产品编码	规格	刃径d1	避空直径d2	避空长L1	柄径D	总长L	刃数F
UNF T72 1.450390450 A	NO.1-72	1.45	1.0	3.9	4.0	50	3
UNF T56 1.950530450 A	NO.3-56	1.95	1.4	5.3	4.0	50	3
UNF T48 2.250600450 A	NO.4-48	2.25	1.6	6.0	4.0	50	3
UNF T40 2.750720450 A	NO.6-40	2.75	1.9	7.2	4.0	50	3
UNF T36 3.30870450 A	NO.8-36	3.3	2.4	8.7	4.0	50	3
UNF T32 3.9100450 A	NO.10-32	3.9	2.9	10	4.0	50	3
UNF T28 5.3120650 A	1/4-28	5.3	4.2	12	6.0	50	3
UNF T20 9.5241075 A	7/16-20	9.5	7.9	24	10	75	4

## UNC粗螺纹

规格	刃径d1	避空直径d2	避空长L1	柄径D	总长L	刃数F	
UNC T64 1.40400450 A	NO.1-64	1.4	0.9	4.0	4.0	50	3
UNC T56 1.650500450 A	NO.2-56	1.65	1.1	5.0	4.0	50	3
UNC T48 1.950500450 A	NO.3-48	1.95	1.3	5.0	4.0	50	3
UNC T40 2.150600450 A	NO.4-40	2.15	1.3	6.0	4.0	50	3
UNC T40 2.450720450 A	NO.5-40	2.45	1.6	7.2	4.0	50	3
UNC T32 2.650750450 A	NO.6-32	2.65	1.6	7.5	4.0	50	3
UNC T32 3.20900450 A	NO.8-32	3.2	2.2	9.0	4.0	50	3
UNC T24 3.7100450 A	NO.10-24	3.7	2.4	10	4.0	50	3
UNC T20 4.9120650 A	1/4-20	4.9	3.3	12	6.0	50	3
UNC T16 7.8200860 A	5/16-18	6.4	4.7	18	8.0	60	4
UNC T18 6.4180860 A	3/8-16	7.8	5.85	20	8.0	60	4
UNC T14 9.2241075 A	7/16-14	9.2	7.0	24	10	75	4
UNC T13 10.241075 A	1/2-13	10	7.5	24	10	75	4

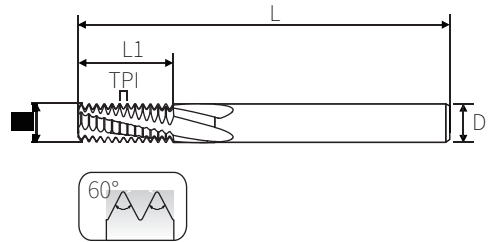
# 全齿公制螺纹铣刀

All Tooth Metric Thread Milling Cutter



◎ = 最佳 Best ○ = 适合 Good

P			H				K	M	N				S	
碳素钢	合金钢	预硬钢	淬火钢钢 Hardened Steel				铸铁	不锈钢	铝合金	铜合金	塑胶	亚克力	高温合金	钛合金
Carbon Steel	Alloy Steel	Prehardened Steel	~48HRC	~55HRC	~60HRC	~65HRC	Cast Iron	Stainless Steels	Aluminium Alloys	Copper Alloys	Plastic Cement	Acrylic		
◎	◎	◎	◎				◎	◎	○	○			○	◎



单位 UNIT=MM

产品编码	尺寸	螺距TPI	刃径d1	刃长L1	柄径D	总长L	刃数F
ISO F0.5 2.4060450 D	M3	0.5	2.4	6.0	4.0	50	4
ISO F0.7 3.15080450 D	M4	0.7	3.15	8.0	4.0	50	4
ISO F0.5 4.0100450 D	M5	0.5	4.0	10	4.0	50	3
ISO F0.75 4.0100450 D	M5	0.75	4.0	10	4.0	50	3
ISO F0.8 4.0100450 D	M5	0.8	4.0	10	4.0	50	4
ISO F0.75 4.8120660 D	M6	0.75	4.8	12	6.0	60	3
ISO F1.0 4.8120660 D	M6	1.0	4.8	12	6.0	60	4
ISO F0.5 6.0160660 D	M8	0.5	6.0	16	6.0	60	3
ISO F0.75 6.0160660 D	M8	0.75	6.0	16	6.0	60	3
ISO F1.0 6.0160660 D	M8	1.0	6.0	16	6.0	60	3
ISO F1.25 6.0160660 D	M8	1.25	6.0	16	6.0	60	4
ISO F1.0 8.0200860 D	M10	1.0	8.0	20	8.0	60	4
ISO F1.25 8.0200860 D	M10	1.25	8.0	20	8.0	60	4
ISO F1.5 8.0200860 D	M10	1.5	8.0	20	8.0	60	4
ISO F0.5 10241075 D	M12	0.5	10	24	10	75	4
ISO F0.75 10241075 D	M12	0.75	10	24	10	75	4
ISO F1.0 10241075 D	M12	1.0	10	24	10	75	4
ISO F1.25 10241075 D	M12	1.25	10	24	10	75	4
ISO F1.5 10241075 D	M12	1.5	10	24	10	75	4
ISO F1.75 10241075 D	M12	1.75	10	24	10	75	4
ISO F1.0 12281275 D	M14	1.0	12	28	12	75	4
ISO F1.5 12281275 D	M14	1.5	12	28	12	75	4
ISO F2.0 11.6281275 D	M14	2.0	11.6	28	12	75	4
ISO F1.5 143214100 D	M16	1.5	14	32	14	100	4
ISO F2.0 133214100 D	M16	2.0	13	32	14	100	4
ISO F2.5 14.83816100 D	M18	2.5	14.8	38	16	100	4
ISO F1.5 163816100 D	M20	1.5	16	38	16	100	4
ISO F2.5 164216100 D	M20	2.5	16	42	16	100	4
ISO F3.0 164216100 D	M24	3.0	16	42	16	100	4

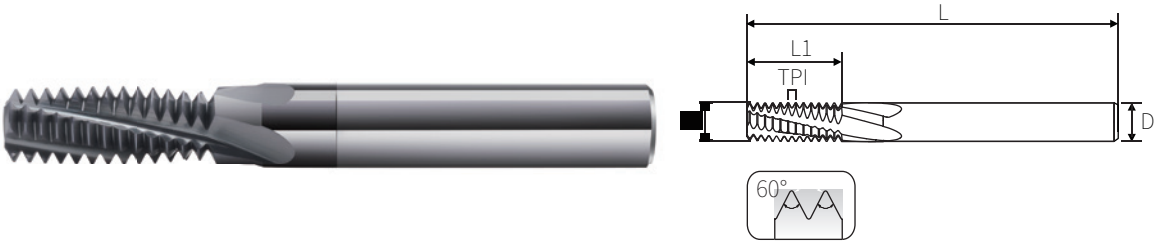
# 全齿美制螺纹铣刀

Full Tooth American Thread Milling Cutter



◎ = 最佳 Best ○ = 适合 Good

P			H				K	M	N				S	
碳素钢	合金钢	预硬钢	淬火钢钢 Hardened Steel				铸铁	不锈钢	铝合金	铜合金	塑胶	亚克力	高温合金	钛合金
Carbon Steel	Alloy Steel	Prehardened Steel	~48HRC	~55HRC	~60HRC	~65HRC	Cast Iron	Stainless Steels	Aluminium Alloys	Copper Alloys	Plastic Cement	Acrylic		
◎	◎	◎	◎				◎	◎	○	○			○	◎



单位 UNIT=MM

产品编码	粗牙 UNC	细牙 UNF	特细牙 UNEF	牙距 TPI	刃径 d1	刃长 L1	柄径 D	全长 L	刃数 F
UNF F32 3.9100450 D		10-32		32	3.9	10	6.0	50	4
UNEF F32 6.8180860 D			5/16-32 3/8-32	32	6.8	18	8.0	60	4
UNF F28 5.3120660 D		1/4-28	7/16-28 1/2-28	28	5.3	12	6.0	60	4
UNF F24 6.5180860 D		5/16-24	9/16-24 5/8-24	24	6.5	18	8.0	60	4
UNC F20 4.85120660 D	1/4-20	7/16-20 1/2-20	3/4-20 7/8-20 1"-20	20	4.85	12	6.0	60	4
UNF F20 9.5241075 D		7/16-20 1/2-20	3/4-20 7/8-20 1"-20	20	9.5	24	10	75	4
UNC F18 6.4180860 D	5/16-18	9/16-18 5/8-18		18	6.4	18	8.0	60	4
UNF F18 10.241075 D		9/16-18 5/8-18		18	10	24	10	75	4
UNC F16 7.8210860 D	3/8-16	3/4-16		16	7.8	21	8.0	60	4
UNF F16 12.281275 D		3/4-16		16	12	28	12	75	4
UNC F14 8.8241075 D	7/16-14	7/8-14		14	8.8	24	10	75	4
UNC F13 10.241075 D	1/2-13			13	10	24	10	75	4
UNC F12 12.281275 D	9/16-12	1"-12 1"-1/8-12 1"-1/4-12 1"-1/2-12 1"-3/8-12		12	12	28	12	75	4
UNC F11 12.281275 D	5/8-11			11	12	28	12	75	4
UNC F10 16.3816100 D	3/4-10			10	16	38	16	100	4

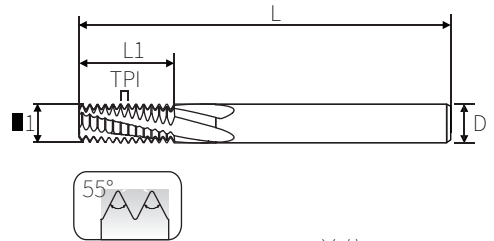
# BSP(G) 55°英制直管螺纹铣刀

BSP(G) 55° Inch Pipe Thread Milling Cutter



◎ = 最佳 Best ○ = 适合 Good

P			H				K	M	N				S	
碳素钢	合金钢	预硬钢	淬火钢钢 Hardened Steel				铸铁	不锈钢	铝合金	铜合金	塑胶	亚克力	高温合金	钛合金
Carbon Steel	Alloy Steel	Prehardened Steel	~48HRC	~55HRC	~60HRC	~65HRC	Cast Iron	Stainless Steels	Aluminium Alloys	Copper Alloys	Plastic Cement	Acrylic		
◎	◎	◎	◎				◎	◎	○	○			○	◎



单位 UNIT=MM

产品编码	尺寸	螺距TPI	刃径d1	刃长L1	柄径D	总长L	刃数F
BSP F28 6.0140660 D	1/16	28	6.0	14	6.0	60	4
BSP F28 8.0140860 D	1/8	28	8.0	14	8.0	60	4
BSP F19 8.0180860 D	1/4	19	8.0	18	8.0	60	4
BSP F19 10201075 D	1/4	19	10	20	10	75	4
BSP F19 12251275 D	3/8	19	12	25	12	75	4
BSP F14 12201275 D	1/2	14	12	20	12	75	4
BSP F1.0 163016100 D	3/4	14	16	30	16	100	4
BSP F11 163216100 D	1"	11	16	32	16	100	4
BSP F11 204520100 D	1"	11	20	45	20	100	5



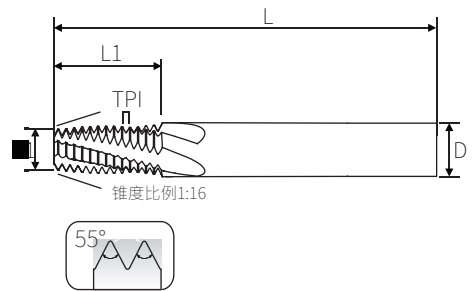
# BSPT(RC) 55°英制锥度密封管螺纹铣刀



BSPT(RC) 55° Inch Pipe Thread Milling Cutter

◎ = 最佳 Best    ○ = 适合 Good

P			H				K	M	N				S	
碳素钢	合金钢	预硬钢	淬火钢 Hardened Steel				铸铁	不锈钢	铝合金	铜合金	塑胶	亚克力	高温合金	钛合金
Carbon Steel	Alloy Steel	Prehardened Steel	~48HRC	~55HRC	~60HRC	~65HRC	Cast Iron	Stainless Steels	Aluminium Alloys	Copper Alloys	Plastic Cement	Acrylic		
◎	◎	◎	◎				◎	◎	○	○			○	◎



单位 UNIT=MM

产品编码	型号	螺距TPI	刃径d1	刃长 L1	柄径D	总长L	刃数F
BSP F28 6.0140660 D	1/16	28	5.3	9.9	6.0	60	4
BSP F28 8.0140860 D	1/8	28	7.3	9.9	8.0	60	4
BSP F19 8.0180860 D	1/4	19	7.0	14	8.0	60	4
BSP F19 10201075 D	1/4	19	9.0	15	10	75	4
BSP F19 12251275 D	3/8	19	11.0	14	12	75	4
BSP F14 12201275 D	1/2	14	10.8	19	12	75	4
BSP F1.0 163016100 D	3/4	14	14.6	21	16	100	4
BSP F11 163216100 D	1"	11	14.3	27	16	100	4
BSP F11 204520100 D	1"	11	17.38	42	20	100	5

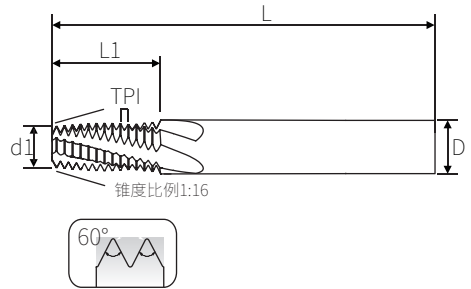
# NPT NPTF美制锥度螺纹铣刀

NPT NPTF American tapered thread milling cutter



◎ = 最佳 Best ○ = 适合 Good

P			H				K	M	N				S	
碳素钢	合金钢	预硬钢	淬火钢钢 Hardened Steel				铸铁	不锈钢	铝合金	铜合金	塑胶	亚克力	高温合金	钛合金
Carbon Steel	Alloy Steel	Prehardened Steel	~48HRC	~55HRC	~60HRC	~65HRC	Cast Iron	Stainless Steels	Aluminium Alloys	Copper Alloys	Plastic Cement	Acrylic		
◎	◎	◎	◎				◎	◎	○	○			○	◎



单位 UNIT=MM

## NPT-60°美制锥度管螺纹

产品编码	型号	螺距TPI	刃径d1	刃长 L1	柄径D	总长L	刃数F
NPT F27 5.4940660 D	1/16	27	5.4	9.4	6.0	60	4
NPT F27 7.4940860 D	1/8	27	7.4	9.4	8.0	60	4
NPT F18 7.11410860 D	1/4	18	7.1	14.1	8.0	60	4
NPT F18 9.11411075 D	1/4	18	9.1	14.1	10	75	4
NPT F18 11.11411275 D	3/8	18	11.1	14.1	12	75	4
NPT F14 10.81811275 D	1/2	14	10.8	18.1	12	75	4
NPT F14 14.818116100 D	3/4	14	14.8	18.1	16	100	4
NPT F11.5 14.62216100 D	1"	11.5	14.6	22	16	100	4
NPT F11.5 17.684520100 D	1"	11.5	17.38	42	20	100	5

## NPTF-60°美制锥度密封管螺纹

产品编码	型号	螺距TPI	刃径d1	刃长 L1	柄径D	总长L	刃数F
NPTF F27 5.4940660 D	1/16	27	5.4	9.4	6.0	60	4
NPTF F27 7.4940860 D	1/8	27	7.4	9.4	8.0	60	4
NPTF F18 7.11410860 D	1/4	18	7.1	14.1	8.0	60	4
NPTF F18 9.11411075 D	1/4	18	9.1	14.1	10	75	4
NPTF F18 11.11411275 D	3/8	18	11.1	14.1	12	75	4
NPTF F14 10.81811275 D	1/2	14	10.8	18.1	12	75	4
NPTF F14 14.818116100 D	3/4	14	14.8	18.1	16	100	4
NPTF F11.5 14.62216100 D	1"	11.5	14.6	22	16	100	4
NPTF F11.5 17.684520100 D	1"	11.5	17.38	42	20	100	5

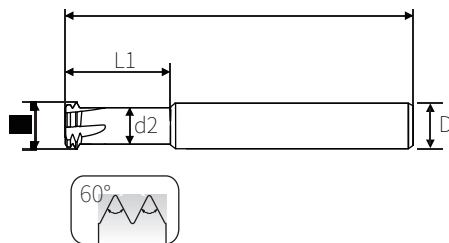
# 公制超硬二排牙螺纹铣刀

Metric Super Hard Two-Row Thread Milling Cutter



◎ = 最佳 Best    ○ = 适合 Good

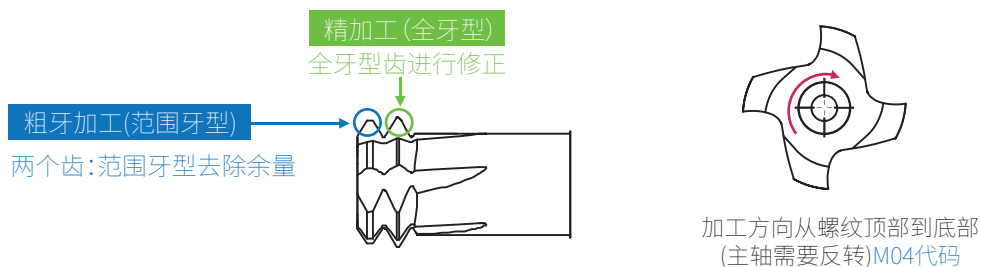
P			H				K	M	N				S	
碳素钢	合金钢	预硬钢	淬火钢 Hardened Steel				铸铁	不锈钢	铝合金	铜合金	塑胶	亚克力	高温合金	钛合金
Carbon Steel	Alloy Steel	Prehardened Steel	~48HRC	~55HRC	~60HRC	~65HRC	Cast Iron	Stainless Steels	Aluminium Alloys	Copper Alloys	Plastic Cement	Acrylic		
			◎	◎	◎									



单位 UNIT=MM

产品编码	尺寸	螺距P	刃径d1	避空直径d2	避空长L1	柄径D	总长L	刃数F
ISO H0.35 1.20320650 H	M1.6	0.35	1.2	0.78	3.2	6.0	50	3
ISO H0.4 1.550400650 H	M2.0	0.4	1.55	1.05	4.0	6.0	50	4
ISO H0.45 2.00500650 H	M2.5	0.45	2.0	1.45	5.0	6.0	50	4
ISO H0.5 2.40600650 H	M3.0	0.5	2.4	1.8	6.0	6.0	50	4
ISO H0.7 3.150800650 H	M4.0	0.7	3.15	2.3	8.0	6.0	50	4
ISO H0.8 4.05100650 H	M5.0	0.8	4.05	3.05	10	6.0	50	4
ISO H1.0 4.8120650 H	M6.0	1.0	4.8	3.6	12	6.0	50	5
ISO H1.25 6.5160860 H	M8.0	1.25	6.5	5.0	16	8.0	60	6
ISO H1.5 8.2201075 H	M10	1.5	8.2	6.4	20	10	75	6
ISO H1.75 9.6241075 H	M12	1.75	9.6	7.5	24	10	75	6

公制超硬二排牙螺纹铣刀工作原理：



# 免打底孔铝用多功能螺纹铣刀



Free Bottom Hole Multi-Function Thread Milling Cutter

◎ = 最佳 Best    ○ = 适合 Good

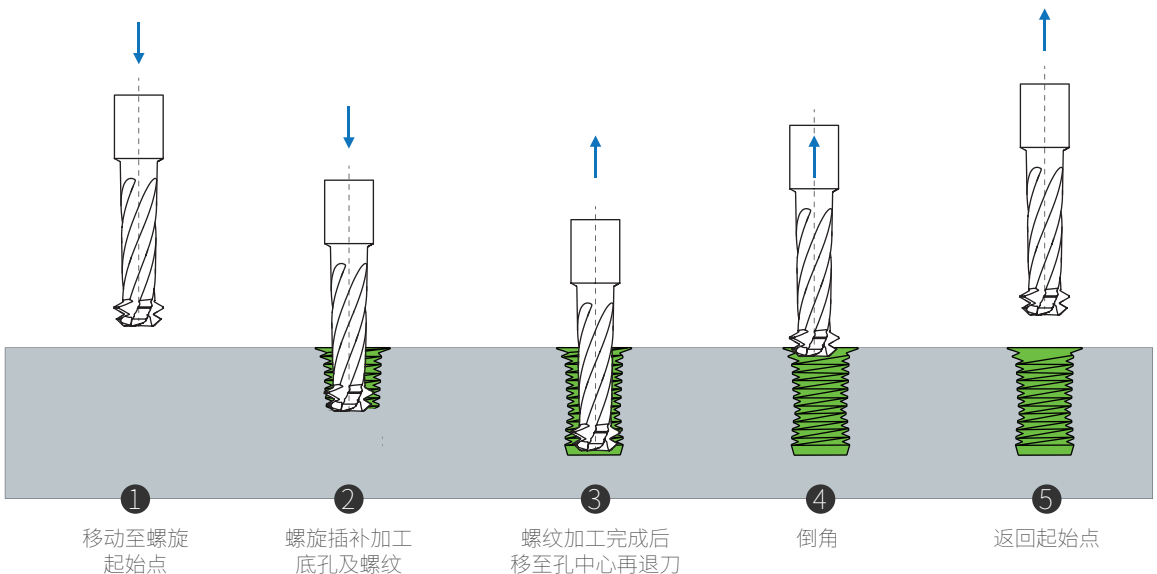
P			H				K	M	N				S	
碳素钢	合金钢	预硬钢	淬火钢钢 Hardened Steel				铸铁	不锈钢	铝合金	铜合金	塑胶	亚克力	高温合金	钛合金
Carbon Steel	Alloy Steel	Prehardened Steel	~48HRC	~55HRC	~60HRC	~65HRC	Cast Iron	Stainless Steels	Aluminium Alloys	Copper Alloys	Plastic Cement	Acrylic		
◎	◎	◎						○						



单位 UNIT=MM

产品编码	尺寸	螺距P	刃径d1	避空长 L1	柄径D	总长L	刃数F
ISO M0.35 1.150500450 DLC	M1.6	0.35	1.15	5.0	4.0	50	2
ISO M0.4 1.50650450 DLC	M2.0	0.4	1.5	6.5	4.0	50	2
ISO M0.45 1.90700450 DLC	M2.5	0.45	1.9	7.0	4.0	50	2
ISO M0.5 2.40900650 DLC	M3.0	0.5	2.4	9.0	6.0	50	3
ISO M0.7 3.2110650 DLC	M4.0	0.7	3.2	11	6.0	50	3
ISO M0.8 3.9120650 DLC	M5.0	0.8	3.9	12	6.0	50	3
ISO M1.0 4.7140650 DLC	M6.0	1.0	4.7	14	6.0	50	3
ISO M1.25 6.5180860 DLC	M8.0	1.25	6.5	18	8.0	60	4
ISO M1.5 7.8230860 DLC	M10	1.5	7.8	23	8.0	60	4
ISO M1.75 9.6261075 DLC	M12	1.75	9.6	26	10	75	4

免打底孔铝用多功能螺纹铣刀加工过程：



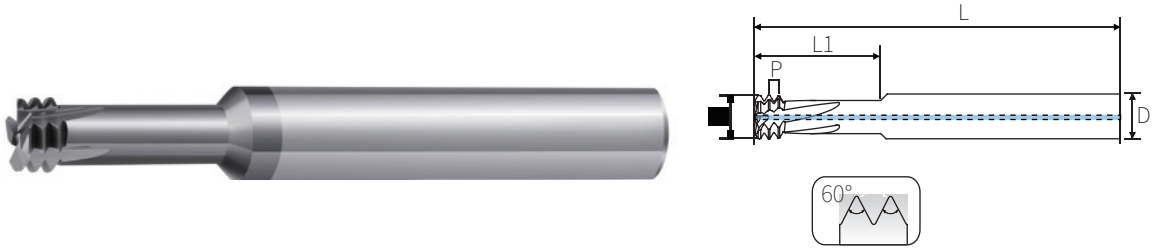
# 免打底孔钢用多功能螺纹铣刀



Free Bottom Hole Multi-Function Thread Milling Cutter-For Steel

◎ = 最佳 Best    ○ = 适合 Good

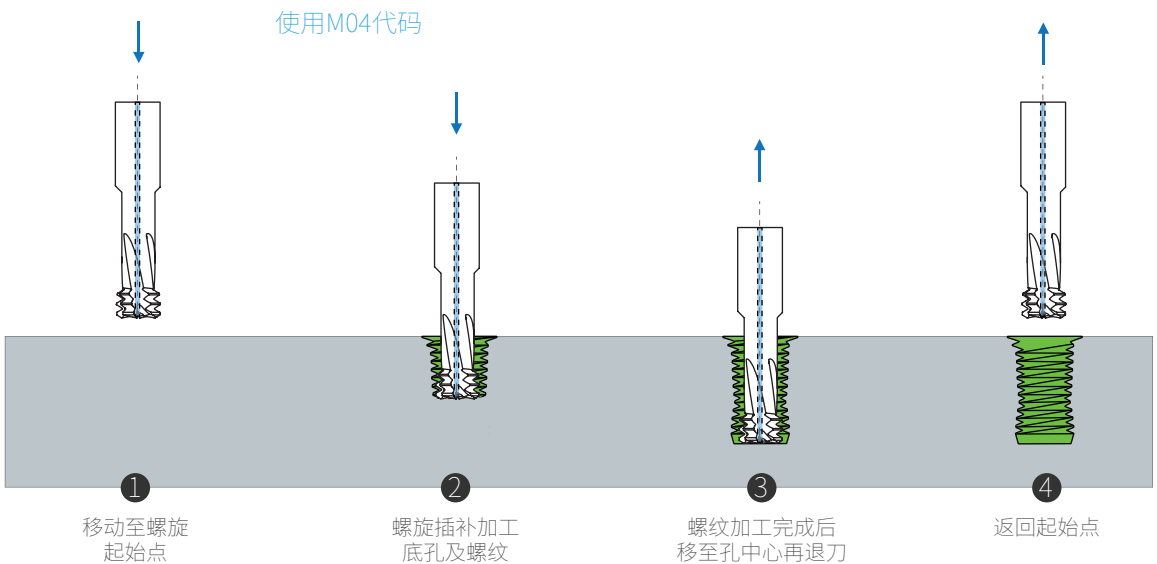
P			H				K	M	N				S	
碳素钢	合金钢	预硬钢	淬火钢钢 Hardened Steel				铸铁	不锈钢	铝合金	铜合金	塑胶	亚克力	高温合金	钛合金
Carbon Steel	Alloy Steel	Prehardened Steel	~48HRC	~55HRC	~60HRC	~65HRC	Cast Iron	Stainless Steels	Aluminium Alloys	Copper Alloys	Plastic Cement	Acrylic		
◎	◎	◎						○						



单位 UNIT=MM

产品编码	尺寸	螺距P	刃径d1	避空长 L1	柄径D	总长L	刃数F	内冷/外冷
ISO M0.5 2.40700650 A	M3.0	0.5	2.4	7.0	6.0	50	4	外冷
ISO M0.7 3.20900650 A	M4.0	0.7	3.2	9.0	6.0	50	4	外冷
ISO M0.8 3.9120650 A	M5.0	0.8	3.9	12	6.0	50	4	外冷
ISO M1.0 4.7140650 A	M6.0	1.0	4.7	14	6.0	50	4	外冷
ISO M1.25 6.2180860 A	M8.0	1.25	6.2	18	8.0	60	4	内冷
ISO M1.5 7.5230860 A	M10	1.5	7.5	23	8.0	60	4	内冷
ISO M1.75 9.0261075 A	M12	1.75	9.0	26	10	75	4	内冷

免打底孔钢用多功能螺纹铣刀加工过程:



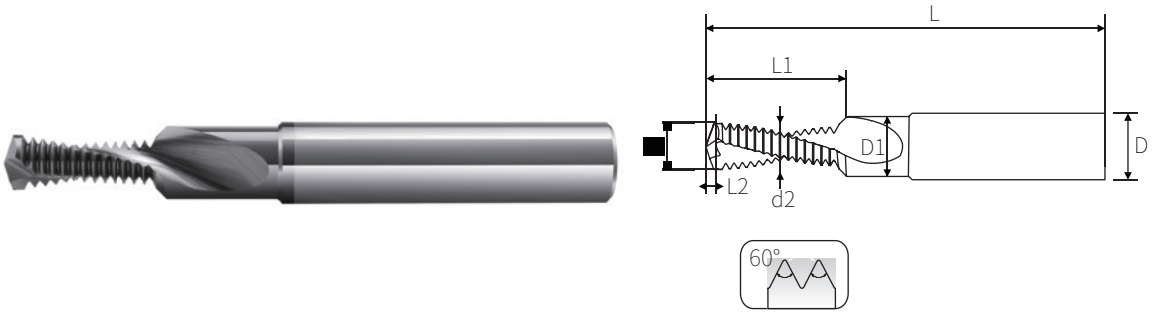
# 三合一钻铣螺纹铣刀

Drilling And Milling Thread Milling Cutter



◎ = 最佳 Best    ○ = 适合 Good

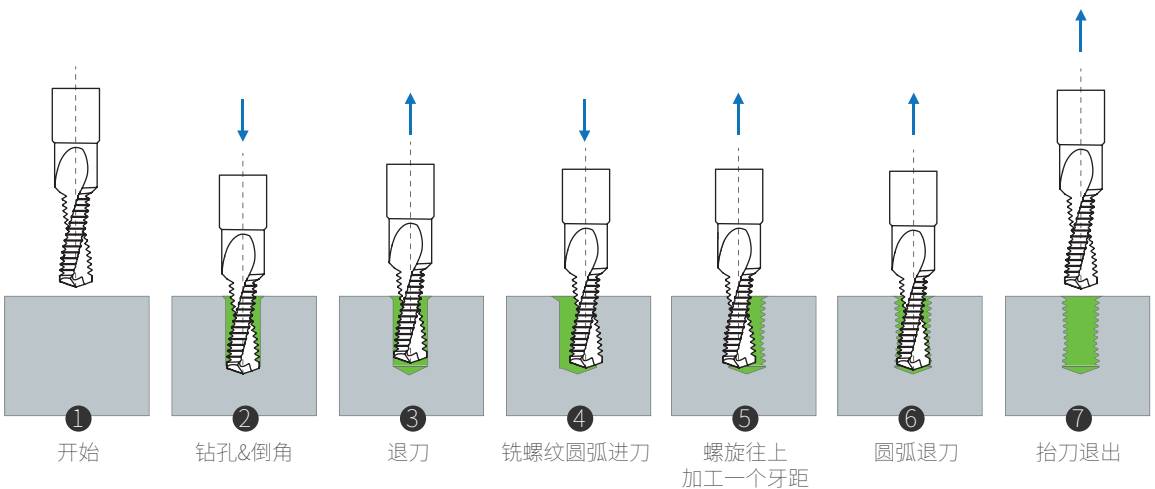
P			H				K	M	N			S		
碳素钢	合金钢	预硬钢	淬火钢钢 Hardened Steel				铸铁	不锈钢	铝合金	铜合金	塑胶	亚克力	高温合金	钛合金
Carbon Steel	Alloy Steel	Prehardened Steel	~48HRC	~55HRC	~60HRC	~65HRC	Cast Iron	Stainlee Steels	Aluminium Alloys	Copper Alloys	Plastic Cement	Acrylic		
							◎		○	○				



单位 UNIT=MM

产品编码	型号	螺纹外径d2	钻头径d1	刃长L1	钻头长L2	颈径D1	柄径D	总长L	刃数F
ISO DR1.0 5.0120860 A	M6*1.0	4.8	5.0	12	1.0	7.0	8.0	60	2
ISO DR1.25 6.0151075 A	M8*1.25	6.5	6.8	15	1.3	9.0	10	75	2
ISO DR1.5 8.5201275 A	M10*1.5	8.2	8.5	20	1.5	11	12	75	2
ISO DR1.75 10.32414100 A	M12*1.75	9.9	10.3	24	1.8	13.5	14	75	2

三合一钻铣螺纹铣刀加工过程:



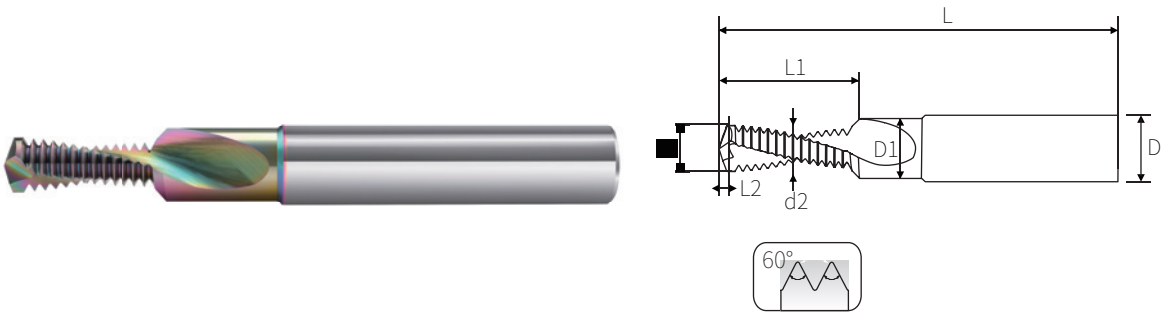
# 七彩三合一钻铣螺纹铣刀

Drilling And Milling Thread Milling Cutter



◎ = 最佳 Best    ○ = 适合 Good

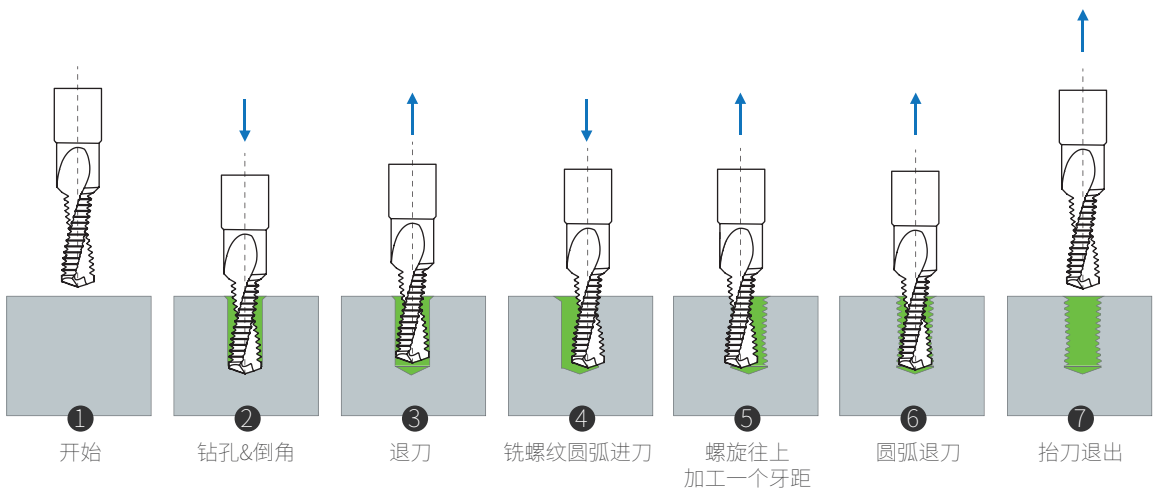
P			H				K	M	N			S		
碳素钢	合金钢	预硬钢	淬火钢钢 Hardened Steel				铸铁	不锈钢	铝合金	铜合金	塑胶	亚克力	高温合金	钛合金
Carbon Steel	Alloy Steel	Prehardened Steel	~48HRC	~55HRC	~60HRC	~65HRC	Cast Iron	Stainless Steels	Aluminium Alloys	Copper Alloys	Plastic Cement	Acrylic		
							○		◎	◎				



单位 UNIT=MM

产品编码	型号	螺纹外径d2	钻头径d1	刃长L1	钻头长L2	颈径D1	柄径D	总长L	刃数F
ISO DR1.0.5.0120860 DLC	M6*1.0	4.8	5.0	12	1.0	7.0	8.0	60	2
ISO DR1.25.6.0151075 DLC	M8*1.25	6.5	6.8	15	1.3	9.0	10	75	2
ISO DR1.5.8.5201275 DLC	M10*1.5	8.2	8.5	20	1.5	11	12	75	2
ISO DR1.75.10.32414100 DLC	M12*1.75	9.9	10.3	24	1.8	13.5	14	75	2

三合一钻铣螺纹铣刀加工过程:



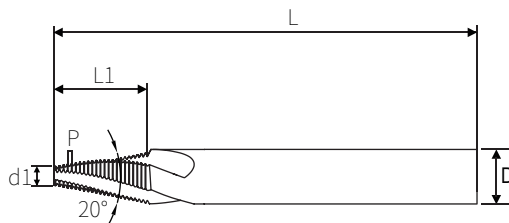
# 钨钢锥度医疗骨板螺纹铣刀

Taper Medical Bone Plate Thread Milling Cutter



◎ = 最佳 Best    ○ = 适合 Good

P			H				K	M	N				S	
碳素钢 Carbon Steel	合金钢 Alloy Steel	预硬钢 Prehardened Steel	淬火钢 Hardened Steel				铸铁 Cast Iron	不锈钢 Stainless Steels	铝合金 Aluminium Alloys	铜合金 Copper Alloys	塑胶 Plastic Cement	亚克力 Acrylic	高温合金	钛合金
			~48HRC	~55HRC	~60HRC	~65HRC								◎



## 公制60度锥度螺纹铣刀

单位 UNIT=MM

产品编码	牙距P	牙型角	刃径d1	角度°	刃长L1	柄径D	总长L
ISO TA0.3 1.9060660 A	0.3	60°	1.9	20°	6.0	6.0	60
ISO TA0.4 2.3100660 A	0.4	60°	2.3	20°	10	6.0	60
ISO TA0.5 2.9090660 A	0.5	60°	2.9	20°	9.0	6.0	60
ISO TA0.6 3.0140860 A	0.6	60°	3.0	20°	14	8.0	60

## 英制55度锥度螺纹铣刀

产品编码	牙距P	牙型角	刃径d1	角度°	刃长L1	柄径D	总长L
W TA0.3 1.9060660 A	0.3	55°	1.9	20°	6.0	6.0	60
W TA0.4 2.3100660 A	0.4	55°	2.3	20°	10	6.0	60
W TA0.5 2.9090660 A	0.5	55°	2.9	20°	9.0	6.0	60
W TA0.6 3.0140860 A	0.6	55°	3.0	20°	14	8.0	60